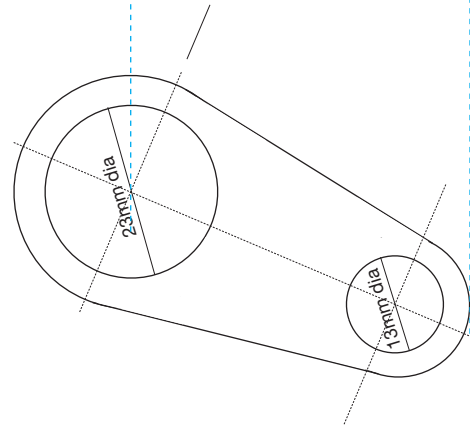
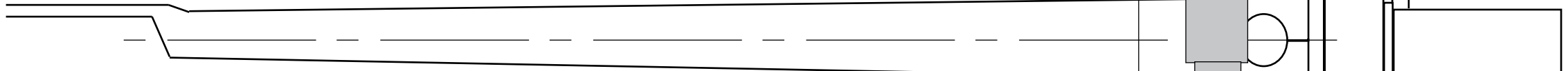


45mm from centre of
mounting hole

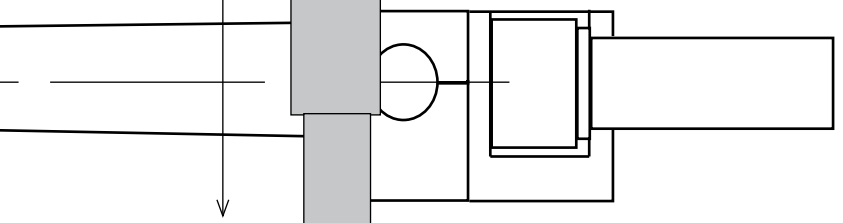


Effective length
239.5mm



Micrometer 65mm
to arm board

Armboard to headshell
47mm



Base 31 dia x 11mm

Base plate 6mm deep

Minimum armboard thickness 6mm,
Maximum 25mm

Lock nut 32mm dia x 6mm

Outer base threaded M23x1

35mm

Minimum clearance for wiring 15mm

Arm board surface

ITEM	S4 Micrometer arm dimensions - reference only
MATERIAL	
FINISH	
TOLERANCES	See parts drawings
SCALE	1:1
Jeff Spall 5 Tormore Mews, Rectory Road, Deal, Kent CT14 9SX jeff@audiomods.co.uk	
V2.4 15/1/2014	